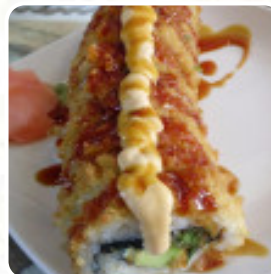




Nacionsushi Costa Del Este Menu

<https://menulist.menu>

2G6G+9M8 BLADEX, Av. De La Rotonda, Panama City, Panama, Tocumen
+5072091515 - <https://www.nacionsushi.com>



On this site, you can find the **complete [menu](#) of Nacionsushi Costa Del Este** from Tocumen. Currently, there are 15 courses and drinks available. For **changing offers**, please contact the restaurant owner directly. You can also contact them through their website. What [User](#) likes about Nacionsushi Costa Del Este:

I have this place! it has such a large selection of dressed and not only inspired by Japanese, some Thai, Chinese, Korean inspired dishes are also there. Many possibilities, both with and without drinking alcohol parking are the only thing that could be a problem when they come with the car. there are no assigned so that on the floor parking on the curb, which depends on how full and other places beside it for free p... [read more](#). As a guest, you can use the WLAN of the place at no extra cost, And into the accessible rooms also come visitors with wheelchairs or physical limitations. If the weather are right, you can also be served outside. [tasty sushi](#) (e.g., [Nigiri and Inside-Out](#)), as well as in numerous additional variations, are prepared for you by Nacionsushi Costa Del Este from Tocumen, with fresh ingredients like fish, vegetables and meat, Inthemorning a versatile brunch is offered here. Most dishes are prepared in a short time for you and served, Furthermore, the customers love the inventive combination of different dishes with new and partially experimental ingredients - a nice example of *successful Asian Fusion*.

Nacionsushi Costa Del Este Menu



Pizza

PACIFICO

Soft drinks

JUICE

Thai specialties*

PAD THAI

Fresh Juices

CARROT

Drinks

DRINKS

Condiments and Sauces

CURRY

Main courses

SUSHI

SIDE SALAD

***These types of dishes are
being served***

SOUP

FISH

Ingredients Used

SHRIMP

CHICKEN

MILK

BEANS

BEEF

Nacionsushi Costa Del Este Menu



Nacionsushi Costa Del Este

2G6G+9M8 BLADEX, Av. De La
Rotonda, Panama City, Panama,
Tocumen

Opening Hours:
Wednesday 11:30-23:00
Thursday 11:30-23:00
Friday 11:30-23:00
Saturday 11:30-23:00
Sunday 11:30-22:00
Monday 11:30-23:00
Tuesday 11:30-23:00

Made with menulist.menu

